

작은벌집딱정벌레 검사 방법

2016. 9. 29.

검역본부 세균질병과 꿀벌질병관리센터

□ 진단 : 육안 검사

○ Small hive beetle 형태

- adult

- size : 3mm × 5-7mm
- color : black
- behavior : hides from the light
- clubbed antennae
- short wing cases



<The adult of small hive beetle>

- 국내 농가에서 채집된 SHB 성충

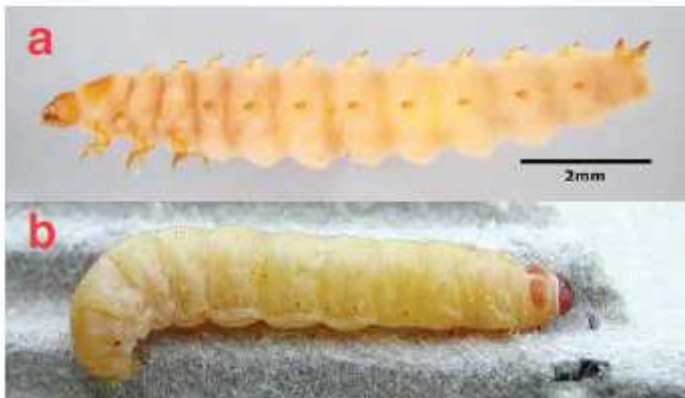
: 곤봉 모양의 더듬이 및 짧은 윗 날개 확인



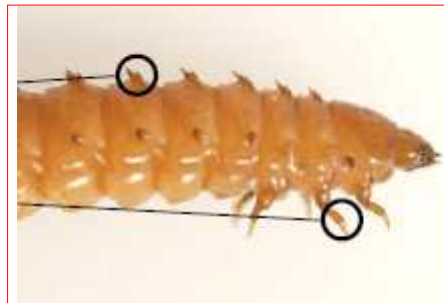
<Small hive beetle in Korea>

- larva

- size : 10-11mm
- color : beige
- spines on dorsum
- 3 pairs of legs at the head end
- short wing cases



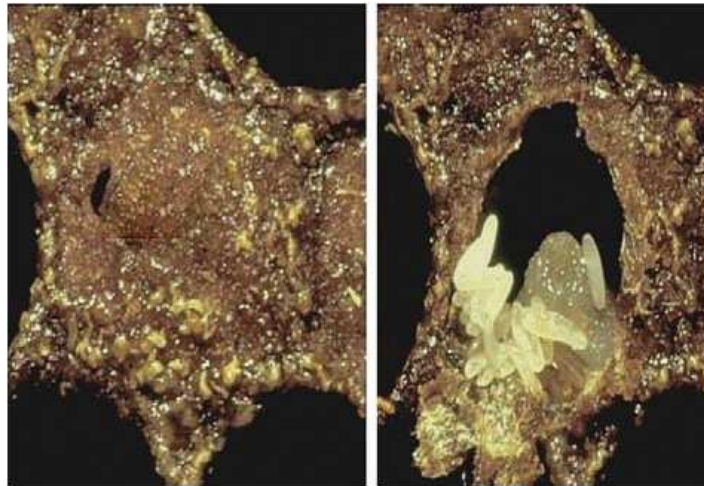
a; SHB, b; wax moth



<The larva of small hive beetle>

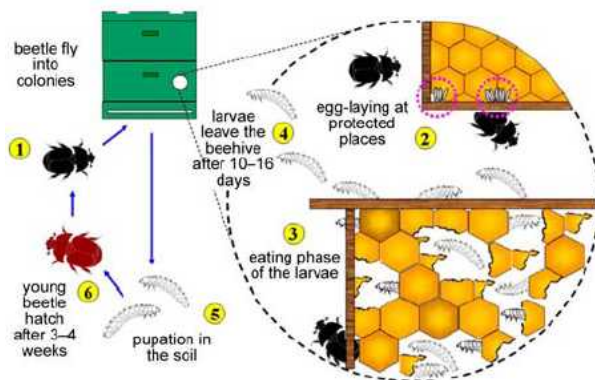
- eggs

- size : 1.5 × 0.25mm (2/3 size of honeybee eggs)
- color : white
- location : masses of eggs (in hive crevices or floor)



<The eggs of small hive beetle>

○ Small hive beetle life cycle



Eggs	1–6 days	Usually 2–3 days
Larvae	10–28 days	Usually about 16 days
– feeding	6–14 days	
– wandering	4–3 days	
Pupae	10–60 days	Usually 21–28 days
Adults		
– sexual maturity	7 days	
– life	6 months	

<The life cycle of the small hive beetle *Aethina tumida*>

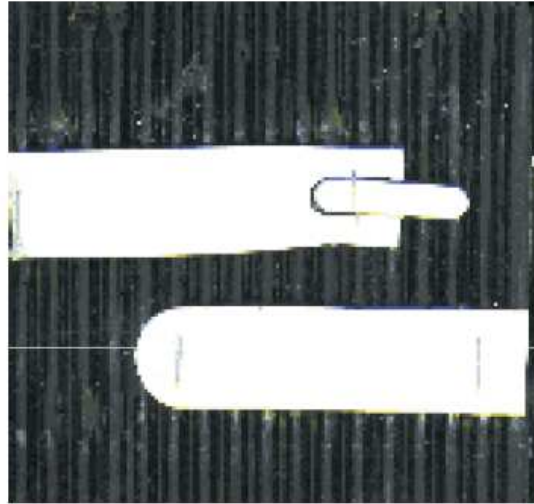
○ 벌통 검사 : 벌통 내부에서 성충 및 애벌레의 존재 확인



<To detect SHB in the hive>

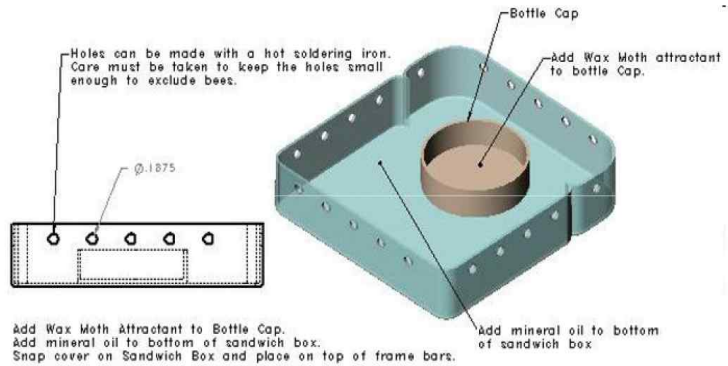
○ Strip 및 Trap을 사용한 검사

- Strip



<Using a strip for the detection of small hive beetle>

- Trap



Grate w/SHB sized holes

Vegetable Oil Tray

Spacer

Bottom Board



Fill with oil and place
between top bars.

<Using a trap for the detection of small hive beetle>